



Sharecropper



Tarrant County Master Gardener Association

November 2013

November
2013

Inside this
issue:

President's Message 3

TCMGA Meeting Minutes 5

Garden Tips & Tidbits 7

Toni's Tips 8

Photo Album 9

TCMGA Education 10

TCMGA Meeting & Programs 12

TCMGA Announcements 13

Calendar 14

TCMGA & Local Events 15

Volunteer Opportunities 16

TCMGA Leadership & Resources 17

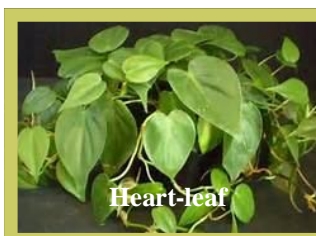
TEXAS A&M
AGRILIFE
EXTENSION

If you have an idea or would like to contribute to the newsletter, please contact Jackie Heidinger jackieheidinger@verizon.net

"Houseplant Twins: Telling Pothos from Philodendron"

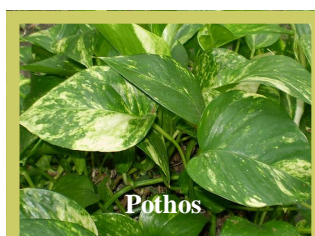
By Marilyn Sallee, Tarrant County Master Gardener

They both make robust houseplants well suited to indoor conditions, and often sold mislabeled as the other. But telling Pothos (*Epipremnum aureum*)



Heart-leaf

from Heart-leaf Philodendron (*Philodendron hederaceum*) requires a close look and some botany knowledge. And knowing which you have tells you important things about care and propagation.



Pothos

Identifying traits of each plant are depicted in the table below:

	Pothos	Philodendron
Stem	Distinct ridge	Smoothly round
Petiole (leaf stem)	V-notch or grooved	Round
Leaf sheath	Short, almost unnoticeable, easily shed	Long, usually stays attached
Leaf thickness	Thicker, crisper	Thinner, more flexible
Leaf shape	Point spade-like	Point slender, tapered
Mature stem	Deep green	Brownish
New Growth	Pale green, shiny-glossy	Green, satin-matte, may have a reddish to olive tinge

Whichever you have, if you treat it right and get it to vine, you can encourage their distinctive traits - Heartleaf Philodendron is also called Velvet-leaf because a mature vine develops a velvety texture. And a true mature Pothos in a good location may develop a split-leaf trait.

While most are commonly grown in hanging baskets or small pots in the home, both of these plants are climbers and can be grown on moss covered posts, support columns or a trellis. I have a friend who has trained her Philodendron on a small triangular pergola to form a five-foot tall "Christmas Tree" in her living room. She repots it every two years to keep it lush and growing.

(Continued on page 2)

Houseplant Twins—continued

If allowed to climb or vine, they can easily reach across the room, or climb a tree in warm climates. You can give it small hooks or supports to cling to and make the vines climb walls or even across windows. Lay the stems on the supports to train it. I have another friend who grows her Pothos from a pot in the dining room window up to the ceiling and around the plate shelf into the living room and kitchen. For this technique in action, check out Katherine Hepburn's office in the movie "Desk Set".

Propagation:

Both vines will form new roots along the leaf-joint, and can be started in water. But for good development, start new plants by wrapping the leaf node in sphagnum or pinning into a good rooting medium. The best time to propagate is in mid-winter. January-February-March while the plant is dormant allows the roots to develop best. Also, tip cuttings encourage the parent plant to branch out and become thicker and fuller; root tip cuttings in moist perlite.



Sources:

Plants are the Strangest People, <http://plantsarethestrangestpeople.blogspot.com/2009/03/epipremnum-or-philodendron.html>
The Exotic Rainforest <http://www.exoticrainforest.com/Epipremnum%20aureum%20pc.html>
Images from Public Domain, Wiki Commons





**Patsy Miller,
TCMGA President**

**“Already I
can see a busy
year ahead.
Join us at the
Christmas
Luncheon!”**



Sharecropper

President's Message

Hello Fellow Gardeners,

Now is the time of year when we have totaled up our volunteer hours (They are due by Oct. 31) and reflect on where the time went and the various activities we were a part of.

I want to share some of the photos that have recently been sent to me about MG projects and field trips. I know that there are a lot of events going on out there, so send me your photos for the newsletter.

Each year Gay Larson, project lead at Union Gospel Mission, honors a Master Gardener volunteer. This year she had two – Mary Jane Goad and Joe McCreary. UGM volunteers meet Mondays at 9 a.m.



“Mary Jane has been faithful to do whatever is needed in landscaping chores for years. Painting benches, pulling weeds (she is great at this) seeing things that need to be done and always willing to go the extra mile. Lately, she offered to make the coffee and make sure that we have snacks for the Master Gardeners and for the classes that we give to the residents. I appreciate her calming personality and willingness to be helpful,” Gay explained.

“Joe is a retired dentist . . . he gets the trash duty, spraying Roundup, removing soil, revitalizing old used trellises, sprinkler repair, donating bird bath then having to water seal it, pruning with chain saw, pruning trees and many other landscaping jobs that continue to make UGM the best project in Texas,” said Gay.



Nancy Curl has a faithful group of volunteers that meet at 9 a.m. on Fridays at the Fort Worth Botanic Garden Backyard Vegetable Garden. This 2012 intern project (now a MG project) has become a go-to place at the Botanic Garden for families. Saturday classes provide a variety of learning experiences targeting families. A new activity on the first Wednesday of each month has MGs partnering with Mike Warren and his children from Lena Pope Home.



See the bumper crop of sweet potatoes and Otto Witt giving an impromptu lesson about sweet potatoes to a visiting group.

The September field trip to McKinney's Meyer's Park, Chambersville Tree Farm and visit to the Crepe Myrtle Trails drew lots of our Master Gardener members. Our guides were members of the Collin County Master Gardeners Association who have earned an international MG award for research done at Meyer's Park.

President's Message—cont'd



Thanks to all those who participated in Arlington's Eco-Fest. We had Master Gardeners educating the public at our booth, at well-attended talks and a special propagation table. Photos are at upper right.



A faithful group meets every Tuesday morning at the Community Demonstration Garden. It's a great way to get hours as there is always something to do at a variety of activity levels. Our sign is almost finished thanks to the work of Richard Kurth, Pat Higgins, Dianne Sterling and Bill Vandever.

Garden Lead Bill Vandever reports that 2013 has been a wonderful year for the garden: "new bathroom, new pavilion and walkway, plus the new container garden thanks to the 2013 class of great interns."

Remember, you can buy a paver (or more) to honor a family member or friend, express yourself with a favorite saying or life message or just your name. The form is on the website or at the monthly meeting.

I'm looking forward to working with our 2014 officers. Already I can see a busy year ahead. Join us at the Christmas Luncheon and installation of officers on Thursday, December 5, at the Woman's Club of Fort Worth. It's a beautiful setting – and MGs have helped with the gardens. Tickets are now on sale. See Eleanor Tuck.

Mark February 8 on your calendar for the regional conference on tomatoes. Get involved in the planning sessions. We have already lined up the speakers – and they literally wrote the book on growing tomatoes in Texas.

See you on November 7.

Patsy Miller
TCMGA President

TCMGA General Meeting—October 2013

President Patsy Miller called the business meeting to order at 10:45 a.m. and welcomed the more than 220 in attendance, including visitors, interns, and certified master gardeners. President Miller, and those present, enthusiastically recognized Kim Freeman who was in attendance after many months of recuperation from a vehicle accident. A quorum was certified.

The minutes of the September meeting were approved as published in the newsletter.

Executive Board

Taddie Hamilton, First Vice President programs, announced that the November meeting morning speaker would be Trip Smith, from the Conservation Greenhouse of the Botanic Gardens, who will talk on propagating Poinsettias. The afternoon speaker will be Dotty Woodson, from the Texas AgriLife Research and Extension Urban Solutions Center, who will talk about cultivating Orchids. Dotty is an owner of D and B Orchids.

The December 5 Holiday Luncheon will be at the Fort Worth Woman's Club, at a cost of \$20 each. Pre-paid reservations are being taken now.

Hamilton further reminded members to complete and return the Interest Survey and Volunteer Sign-up which is available at the sign-in table.

Linda Hawkins, Ways and Means, reminded that spring bulbs were available for sale, as are small bottles of liquid fertilizer @ \$5 and worm castings @ \$25.00 per bag. Hawkins shared that there were a few bags of fertilizer available. Roses are available for pick up at the Community Garden for one hour after this meeting. Today is the last day to purchase garden gear until January.

In November we will have vendor tables.

Steve Chaney, CEA, announced that we were still in need of a Speakers Bureau chair and a Junior Master Gardener chair.

Ginger Bason, President Texas MGA, announced that the state MG conference is October 17-19 in McAllen.

The first payment for the January 10-17, 2014 Cuernavaca trip is due October 4. There will also be a trip to Cuernavaca leaving June 13, 2014.

Bason reminded that the Garden Conservancy tour is Sunday October 12, and volunteers are still needed. Volunteer docents will receive free admission to all gardens.

Pam Braak, Treasurer presented the September financial statement showing

Treasurer's Report

For Month Ended
September 30, 2013

Cash, Beginning 9/1/2013	\$27,692.31
Deposits during month	\$8,548.69
Checks during month	<u>\$3,161.24</u>
Cash, Ending 9/30/2013	\$33,079.76

There were no questions and the report was filed.

Continued on next page

TCMGA General Meeting—October 2013 (cont'd)

Page 6

Committee Reports

Susan Stanek, Nominating Committee, introduced the proposed 2014 slate of officers, asked for nominations from the floor, and explained the voting procedure. The election process was turned over to Taddie Hamilton. Having no nominations from the floor, the following were elected for 2014:

President: **Patsy Miller**
1st Vice President, Programs:

Marianne Levine

2nd Vice President, Ways & Means:
Marilyn Satterfield

Secretary: **Theresa Thomas**
Treasurer: **Starr Krottinger**.

Donna Fry, Raffle Chair, announced three raffle items, which were a Weed Eater, 2 beautiful concrete leaves, and a “Worm Hotel,” or earth-worm bin.

Carol Lally, Time Keeping, explained the online timekeeping system that will go into effect November 1. MGs will track their own hours and record mileage, rather than drive time.

Announcements

- Today is the Intern Container Garden Open House & plant sale.
- Oct. 5, BRIT Harvest Festival. Thank you to those that volunteered.
- Oct. 22, 6:30 p.m. Katey Rudd, Community Garden Coordinator, Tarrant Area Food Bank, Ridglea Christian Church, 6720 W. Elizabeth Lane 76116. Learning Garden (to be) site.

Rudd, would also like to have a gardening mentor for Refugee Services clients
- Nov. 26, Grapevine Garden Club Fundraiser-Neil Sperry speaker
- Feb. 8, 2014 Regional Conference on Tomatoes
- Feb. 21-23, Fort Worth Home & Garden Show
- October and November education classes and tours of the Perennial and Trial Gardens, are listed on the bulletin board.
- 2014 dues are due **NOW**, photos for the directory are being taken today.
- Marianne Levine asked for volunteer dental hygienist and a nutritionist for a project she is involved with.

Old business

None.

New Business

None.

Door Prizes were distributed and, with no further business, the meeting adjourned at 11:40 am.

Respectfully Submitted
Joanne McClendon
for Donna Morris

Birth Flowers and Their Meaning



November's birth flower is the Chrysanthemum (mum). There are both annual and perennial chrysanthemums.

The meaning of the mum is "with love and cheerfulness."

The hidden message of the mum during the Victorian era was "You are a wonderful friend."

Bird Month flower information attained from www.birthdaygems.org/

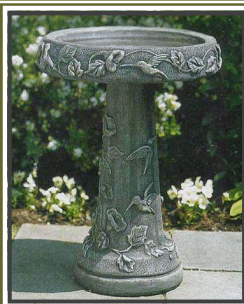
THE BUZZ ON BUGS

The Fall Migration

(September - November). This figure is an interpretation of the routes taken by Monarchs during the Fall migration. The pathways are based on tag recoveries and observations of Migrating Monarchs. This graphic, together with its Spring counterpart, also appears on our "Fall and Spring Migration Patterns" large format poster.



www.monarchwatch.org/ monarch@ku.edu



Keep your concrete and stone garden decorations from cracking in the winter.

Porous concrete and stone statuary absorb water easily. When a snap freeze occurs, the water forms ice crystals inside the stone and breaks it apart. I've lost concrete birdbaths and garden statues, as well as clay pots, to this rare but damaging event. To prevent the damage, just paint a few coats of water-seal on the stone in the fall

before it gets too cold. The water-seal keeps the concrete from absorbing moisture and protects it from the freeze damage. The water-seal, like you use on decks, leaves a water-proof invisible coating on the surface once it dries. Do it every fall, because it wears off during the summer.

Tip contributed by Marilyn Sallee, TCMG

You Know You're a Master Gardener When:



You buy a bigger truck so that you can haul more mulch.

Pssst, wanna hear a joke?



FromNoDig-Gardening.blogspot.com

Name that Plant?

Skill: Intermediate

Description:

I am a deciduous tree I am on the small side, I grow to about 15-20 feet. But don't let my size fool you, I am tough! I like hot arid conditions and can thrive on minimal water. My long narrow leaves resemble another type of tree that weeps. I bloom in late spring. My blooms are trumpet-shaped, sweetly fragrant, and range from light pink to light violet, rarely white or red.

What am I?

Answer: Revealed next month.

Answer to Last Month's "Name That Plant":

Bear's Breeches Plant



Ph

Do you have a "mystery plant? Write a "name that plant" paragraph and submit to jackieheidinger@verizon.net



Toni's Tips

Trees

Fall and winter are THE BEST times for planting trees. Even though the upper part of the tree may be dormant during the winter, the roots will continue to develop throughout the winter, and your new tree will be very well established before next summer's heat. Nurseries usually have great sales going on this time of year, too! If you need to transplant a tree, wait until it is completely dormant, usually January.

When planting trees, never add anything to the planting hole except the soil that came out of the hole. Amending the planting hole basically creates a "container" in the ground. The tree roots may not want to move beyond the nice cushy soil of the "container," and when the roots hit the native soil, they may circle back, eventually girdling the tree.

Dig a wide hole no deeper than the height of the root ball, and loosen or break up the sides of the hole with a shovel or rake. Take the tree out of the container, scrape the top couple inches of soil off the top of the root ball until you can see the flare of the trunk. (I just use a broom to brush the soil away). That is the top of the root ball. Break up any roots encircling the root ball. If the tree is really root bound, you may need to slice into the sides of the root ball with a shovel or knife.



Place the tree in the planting hole with the top of the root ball (the flare of the trunk) a couple inches **ABOVE** your soil grade. Back-fill around the root ball, once again, only with the soil that was dug out of the planting hole. Add root stimulator and water well to settle the soil.



Add compost to the **TOP** of the root ball area if needed, feathering it out to your surrounding soil grade. Then mulch around the tree, taking care to not cover the trunk flare. During the first year or two, you will need to give your tree supplemental water during hot, dry weather. Water slowly and deeply to encourage deep root development



NOTE: If you are planting a Shumard Red Oak or Chinese Pistachio, Neil Sperry highly recommends wrapping the trunk with tree wrap (see above) for two years to prevent sun scald and borer attack.



It is not necessary, however, to stake trees after planting, unless you have a high wind situation that may cause the tree to uproot before it is established. Trees will establish a stronger root system if not staked. If staking is necessary, be sure to remove all staking material after about one year.

Fall Annuals



For late fall/winter annual color, plant: pansies/ violas, dianthus, dusty miller, cabbage/kale, curly parsley. They can handle just about anything our Texas winters dish out. Other color options are: snapdragons, alyssum, cyclamen, mustard, and Swiss chard, but they may need to be covered and protected if a hard freeze is expected.

Herbs and Vegetables

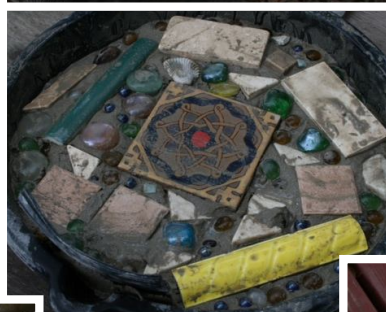
Cool season veggies like carrots, radish, spinach, and turnips can be planted now. Click for a complete fall vegetable planting guide for North Texas, go to: <http://aggie-horticulture.tamu.edu/archives/parsons/fallgarden/falldirect.html>

Bulbs



Did you order spring blooming bulbs from TCMGA? We can pick them up at the November meeting! Plant bulbs in a hole 3 times the height of the bulb. *Daffodils*, *do not need pre-chilling* and can be planted anytime after October 1st and through mid-January. Several good varieties of daffodils are: Ice Follies, Carlton, Fortune, Golden Dawn, and Grand Primo. Also try Spanish bluebells, Byzantine gladiolus, leucojum, species tulips, petticoats, fall crocus, and lycoris (red spider lilies). *Tulips*, *Hyacinth*, and *Crocus* need to be *pre-chilled* prior to planting. To pre-chill bulbs, store the bulbs in the refrigerator at 45°F for 45 to 60 days; then plant in late December, early January, when soil temperatures reach 45-50°F.

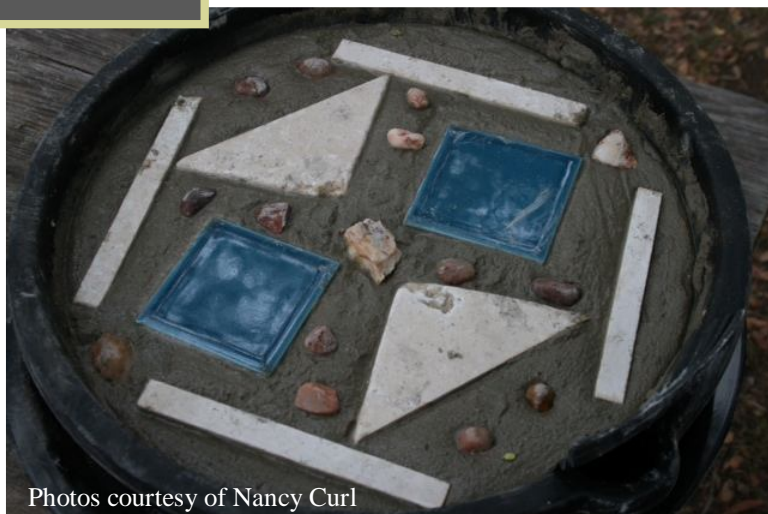
Photo Album



RCCG

Stone Mosaic
Class

See what you missed?



Photos courtesy of Nancy Curl

TCMG EDUCATION—

Page 10

Tarrant County Master Gardener classes at the TCMGA

Community Demonstration Garden

@ Resource Connection of Tarrant County
Circle Drive, Fort Worth, Texas

Saturday, November 16, 2013

10 am – 12 noon **Broken Pot Fairy Garden**

Canceled

New classes will be scheduled for next year soon.



Fort Worth Botanic Garden

"Enriching people's lives through environmental stewardship and education"

Saturday, November 9, 2013

10 am

Glass Orb Terrarium

Instructor – Master Gardener

Make & Take

Location – Fort Worth Botanic Garden – Backyard Vegetable Garden Pavilion

Cost: \$8 per family (up to 4 family members)

Class limit: 20

Pre-registration required

Wednesday, November 13, 2013

10 am

Guided Tour of the Fort Worth Botanic Garden Perennial Garden

Members of the Fort Worth Botanic Garden - Perennial Garden Master Gardener Project conduct an informal tour of the Perennial Garden on the second Wednesday of the month at 10 am. The tour lasts approximately 45 minutes, with lots of time for questions.

The tour is free. No advanced reservations are needed. Just look for the sign in the BG and show up!

Thursday, November 14, 2013

9 am

Guided Tour of the Fort Worth Botanic Garden Trial Garden

Members of the Fort Worth Botanic Garden - Trial Garden Master Gardener Project conduct an informal tour of the Trial Garden on the second Thursday of the month at 9 am. The tour lasts approximately 45 minutes, with lots of time for questions.

The tour is free. No advanced reservations are needed. Look for the sign in the BG and just show up!

Wednesday, December 11, 2013

10 am

Guided Tour of the Fort Worth Botanic Garden Perennial Garden

Members of the Fort Worth Botanic Garden - Perennial Garden Master Gardener Project conduct an informal tour of the Perennial Garden on the second Wednesday of the month at 10 am. The tour lasts approximately 45 minutes, with lots of time for questions.

The tour is free. No advanced reservations are needed. Just look for the sign in the BG and show up!

Thursday, December 12, 2013

9 am

Guided Tour of the Fort Worth Botanic Garden Trial Garden

Members of the Fort Worth Botanic Garden - Trial Garden Master Gardener Project conduct an informal tour of the Trial Garden on the second Thursday of the month at 9 am. The tour lasts approximately 45 minutes, with lots of time for questions.

The tour is free. No advanced reservations are needed. Look for the sign in the BG and just show up!

TCMG

EDUCATION— cont'd

Page 11



Save the Dates--Urban Farming Options

Ever thought of going in to business growing vegetables, fruits, nuts or other horticultural crops? Want to diversify your agricultural production?

Texas A&M AgriLife Extension Service--Tarrant County invites you to participate in one or more of six webinars plus hands-on activities and tours, addressing the following topics for the small-acreage producer:


Aquaponics: Principles and Practices February 20, 2014 	Composting for the Small Acreage Producer April 24, 2014 	Grafting Vegetables: Principles and Practices June 19, 2014 
Practical Weed Control August 21, 2014 	Food Safety for the Small Acreage Producer October 16, 2014 	Business Planning December 11, 2014 

The goal of the program is to assist producers in evaluating diversification strategies and income opportunities from the production of small acreage horticultural crops.

Bring your questions. A Q/A session is scheduled at the end of each webinar, and there will be time for discussion and networking with fellow producers.

Programs will be held at the Tarrant Plaza Building, 200 Taylor, Fort Worth Room, Fort Worth, Texas, 76102 and on site at various locations.

For additional information please contact
Laura M. Miller, County Extension Agent, Commercial Horticulture,
Texas A&M AgriLife Extension Tarrant County, 817-884-1945
lmmiller@ag.tammi.edu




Saturday,
November 9, 2013
8:45 a.m. - 12:00 p.m.
Program begins at 9 a.m.
Davis Boulevard
Baptist Church
5408 Davis Boulevard
NRH, TX 76180

\$15 per household
(2 people max per payment)

It's an issue for everyone!

- ♦ Owners of personal property
- ♦ Family members
- ♦ Executor/Executrix
- ♦ Spouses
- ♦ Adult Children
- ♦ Siblings
- ♦ Grandchildren
- ♦ Blended families


Instructed by: Marian Ross, M.S.
County Extension Agent
Family & Consumer Sciences
and TEEA Trained Volunteers



I Thought that Was Mine?!

Seeing relatives over the holiday's? Need to began the conversation, on the distribution of non-titled property? This could help you and your family prepare. Workshop will help you and your family:

- ♦ Recognize sensitivity of the issue
- ♦ Determine what you want to accomplish
- ♦ Decide what's "fair"
- ♦ Understand belongings have different meanings to different individuals
- ♦ Consider distribution options and consequences
- ♦ Agree to manage conflicts if they arise



Registration Form

Name (s): _____

Address: _____

Phone: _____ Email: _____

*Additional Packets may be purchased at an additional cost of \$5 (must prepay to receive at program)

☐ **Enclosed \$15**
Make checks or money orders payable to Tarrant TEEA
mail to: FCS Department, P.O. Box 1540, Fort Worth, TX 76101

Must Pre-register with payment by Friday, November 1, 2013.
(Minimum registrants required - 15)

Educational programs of Texas A&M AgriLife Extension Service are open to all people without regard to race, color, sex, disability, religion, age, or national origin. The Texas A&M University System, U.S. Department of Agriculture, and the County Commissioners Courts of Texas Cooperating. Individuals with disabilities who require an auxiliary aid, service, or an accommodation in order to participate in this meeting are encouraged to contact Marian Ross, CEA-Family and Consumer Sciences, Texas A&M AgriLife Extension ten (10) days before program at 817-884-1294.

2013 TCMGA Meeting Programs

TCMGA Program—The Color of Christmas – Poinsettias and Orchids

Trip Smith, poinsettia grower and creator of poinsettia trees, will share the production of thousands of poinsettias which must be ready by December 1 each year. The process is fascinating and must be carefully timed to produce the beautiful plants that grace the DBM Garden Center each year and serve as gifts for hundreds of volunteers in the Fort Worth Botanic Garden.

Trip has Horticultural BS and MA degrees from Texas A & M along with years of experience as a pecan and fruit orchardist, vegetable gardener and bee keeper. He is also the curator of the Conservation Greenhouse and Orchid Collection at the Fort Worth Botanic Garden.

In the afternoon we are pleased to have Bill Mastin, the President of the Fort Worth Orchid Society teach us how to care for orchids. Bill will show us how to repot and care for the most beautiful and delicate plants in our homes.

See you there!

It's Beginning to Look a Lot Like Christmas!

The Master Gardener Holiday Luncheon and Awards ceremony will be held on Thursday, December 5, 2013, at 10:30 A.M. at The Woman's Club of Fort Worth. The beautiful buildings at 1316 Pennsylvania will be the site of the luncheon. Please park in the lot off Ballinger Street and enter through the Memorial Garden. Lunch will be served in Anna Shelton Hall. The Awards Committee is planning lots of fun awards and, of course, the Master Gardener of the Year!

The price is \$20. Please make your reservations at the table at the meeting with cash or check! Eleanor Tuck will accept reservations until December 1. You don't want to miss this lovely day!

Taddie Hamilton
1st Vice President

ANNOUNCEMENTS

Vendors will be at the November TCMGA meeting so there won't be an exchange table of magazines, plants and seeds. They will return in January!

1 Marilyn Sallee, John Gernhauser
4 Tammye Kuntz
5 Dorothea Theus, Jackie Heidinger
6 Dick Oliver
7 Jane Dunkelberg
9 Rita Schiavone, Susan Peterson
11 Connie Montoya
12 Judie Porter, Amy Heglund
15 Hester Schwarzer, Carol Anne Loney
16 Carol Norfleet
18 Patti Maness
19 Dianne Sterling, Beverly Crawford
20 Nancy Craig, Michael Loney
21 Barbara Lind, Louis DeSantis
22 Lavonne Nowlin, Warren Tingley
29 Jim Nelson, Linda Carver
30 "Gus" Guthrie

Happy Birthday! November 2013

If your birthday is this month and you don't see it, please contact

Doris Hill,
(817) 337-8484 or email

artanddorishill@verizon.net

Directory/Membership Updates

Please welcome our new members to TCMGA:

- Lee Unger, transferee from El Paso, email address is ellee5846@sbcglobal.net
- Diana Christopher, transferee from Houston, her email address is dianachristoper@sbcglobal.net
- Lori Maxwell, moved back to DFW, her email address is lolomaxwell@comcast.net
- Sue Newhouse, transferee from Denton County, her email address is suenewhouse@yahoo.com

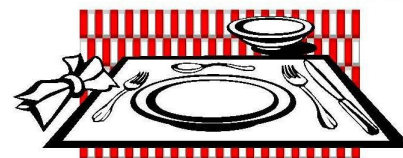
Please correct Susie Cooper's phone # in the Directory, the correct number is 307-299-6635.

If you have any questions, please call me at 817-545-7888 or email to spurdy06@sbcglobal.net.

Steve Purdy
Membership



TEXAS A&M AGRI LIFE EXTENSION



If you're wondering What's for **Dinner Tonight?**

Texas A&M AgriLife Extension Service has the answer! Visit our healthy living website at:

<http://healthyliving.tamu.edu>

View videos for quick and simple dishes your family will enjoy. Download the recipes for complete instructions and read our blog for simple tips to help you get a tasty meal on the table for your family's **Dinner Tonight**.

To receive weekly email updates of new videos and recipes send request to: Tanica Bell

FCS Administrative Assistant
tbell@ag.tamu.edu

Educational programs of Texas A&M AgriLife Extension Service are open to all people without regard to race, color, sex, disability, religion, age or national origin. The Texas A&M University System, U.S. Department of Agriculture, and the County Commissioners Courts of Texas Cooperating.

November 2013 Calendar of Events

Sun	Mon	Tue	Wed	Thu	Fri	Sat
					1 9a BG BVG	2 8:30a Common NRH 9am Wildscape Composting Demo— Veterans Pk.
3  Fall back Daylight-saving time ends Sunday at 2 a.m., so don't forget to set your clocks back one hour.	4 8:00a Heritage 8:30a Alice Carlson 9a Union Gospel 9a Fitzgerald	5 8a Samaritan House 8:30a CG Veggie 9a CG Propagation Work Day 9a CG Rose Garden Work Day	6 8a Thistle Hill 9a BG Perennial 8:30a Common NRH 9a Veterans Pk 9a Teen Challenge 9a CG Herb Work 9a Durham Inter. 3:15p Fitzgerald	7 8a Liberty Garden 8:30a Alice Carlson 8:30a BG Trial TCMGA Meeting	8 9a JPS Meditation Garden 9a BG BVG	9 8:30a Common NRH 9am SW Crthse BVG—Glass Orb Terrarium
10	11 8:00a Heritage 8:30a Alice Carlson 9a Union Gospel 9a Fitzgerald 	12 8a Samaritan House 8:30a CG Veggie 9a CG Propagation Work Day 9a CG Rose Garden Work Day	13 8:30a Common NRH 9a BG Perennial 9a Veterans Pk 9a Teen Challenge 9a CG Herb Work 9a Durham Inter. 9a Bob Jones 3:15p Fitzgerald Guided Tour of FW Botanic Garden Perennial	14 8a Liberty Garden 8:30a Alice Carlson 8:30a BG Trial 9a FW Hulen Lbry Guided Tour of FW Botanic Garden Trial Garden	15 9a BG BVG	16 8:30a Common NRH
17	18 8:00a Heritage 8:30a Alice Carlson 9a Union Gospel 9a Fitzgerald	19 8a Samaritan House 8:30a CG Veggie 9a CG Propagation Work Day 9a CG Rose Garden Work Day	20 8a Thistle Hill 8:30a Common NRH 9a BG Perennial 9a Veterans Pk 9a Teen Challenge 9a CG Herb Work 9a Durham Inter. 9a Bob Jones 3:15p Fitzgerald	21 8a Liberty Garden 8:30a Alice Carlson 8:30a BG Trial	22 9a JPS Meditation Garden 9a BG BVG	23 8:30a Common NRH
24	25 8:00a Heritage 8:30a Alice Carlson 9a Union Gospel 9a Fitzgerald	26 8a Samaritan House 8:30a CG Veggie 9a CG Propagation Work Day 9a CG Rose Garden Work Day 	27 8:30a Common NRH 9a BG Perennial 9a Veterans Pk 9a Teen Challenge 9a CG Herb Work 9a Durham Inter. 9a Bob Jones 9am SW Crthse 3:15p Fitzgerald	28 8a Liberty Garden 8:30a Alice Carlson 8:30a BG Trial 	29 9a BG BVG	30

Notable November Events

- **TCMGA Meeting—November 7**
- **Guided Tour of FW Botanic Garden Perennial Garden—November 13**
- **Guided Tour of FW Botanic Garden Trial Garden—November 14**
- **FWBG Backyard Vegetable Garden Classes—November 9**
- **TCMGA CG Classes—None scheduled this month**
- **TCMGA Field Trip —None scheduled this month**
- **TCMGA Specialist Training—None scheduled this month**

TCMGA and Local Events



As the most familiar voice in Texas horticulture, garden expert Neil Sperry needs no introduction to gardeners in this region. Whether you're a novice gardener or a skilled Master Gardener, Neil will help guide you through your gardening challenges. Join us as Neil shares photos of his own garden along with other notable gardens he has visited in his program *Texas Home Landscaping - Planning and Plants*.

TICKETS \$15

ON SALE OCT 1st AT:

MARSHALL GRAM
GRAPEVINE

CALLOWAY'S NURSERY
HURT & SOUTHWEST

OR BY EMAIL AT:

TICKETS@GRAPEVINEGARDENCLUB.COM

NOVEMBER 26, 2013

10:00 AM

THE PALACE THEATRE
300 SOUTH MAIN STREET
GRAPEVINE



PROCEEDS BENEFIT THE
GRAPEVINE BOTANICAL GARDEN GREENHOUSE PROJECT
WWW.GRAPEVINEGARDENCLUB.ORG



TCMGA Holiday Luncheon

10:30am-Punch and Coffee, 11:30 -Lunch, 12:30pm -Program

Where: The Woman's Club of Fort Worth
1316 Pennsylvania
Ft. Worth 817-335-3525

Cost: \$20.00 per person

**Make your reservations at the November meeting
Or mail your check to:**

Eleanor Tuck
8328 Patreota Drive
Benbrook, TX 76126

TCMGA Volunteer Opportunities

Page 16

Project Code & Name	Work Days/Times	Project Manager	Phone
301 BRIT Activities	Call Chairman	Kay Yount	817-292-7690
302 BG Perennial Garden	Wed. 9 am	Cindy Woelke	817-366-4436
302 BG Backyard Vegetable Garden	Fri. 9 am—12n	Nancy Curl	817-319-1795
302 BG Trial Garden	Thurs. 8:30-11:30am	Susan Miller semiller@sbcglobal.net	817-261-1420
303 Community and Demo Garden Chair Project Leads	Bill Vandever, bvandever@sbcglobal.net		817-244-1580
Community Garden, Tuesdays			
Barn Beds	Charlotte Berck, caberck@dot11net.		817-426-6417
Compost & Rainwater Harvesting			
Community Vegetable Beds	Pat Higgins, ragdollpath@sbcglobal.net		817-946-6278
Demonstration and Enabling Beds	Frank Durda, fdurda@hotmail.com		817-292-2270
Education	Nancy Curl, nl_curl@yahoo.com		817-319-1795
Education – TCU	Lance Jepson ljepson@aol.com & Pat Higgins	817-557-6122	817-946-6278
Enabling Garden	Frank Durda, fdurda@hotmail.com		817-292-2270
Greenhouse/Propagation	Claire Alford, caagardner@aol.com		817-481-8861
Herb Garden, Tuesdays	Rita Hottel, rnhottel@att.net		817-929-6847
Hospitality (Cook-outs)	Beverly Beazley, babeazley@tx.rr.com		817-483-7080
Orchard	Char McMorro, charlenemcmorrows@sbcglobal.net		817-228-4548
Perennial Garden	Ginger Bason & Joann Hahn, gbason@hotmail.com, joannhahn@att.net	817-838-7321	817-923-9250
Plant Sales	Sue Kelley and Peggy Harwood sandrkelley@sbcglobal.net, peggyjwh@gmail.com	817-233-7118	817-821-4988
Potting Shed	Pat Lovejoy, palovejoy@att.net		817-447-7924
Rain Barrel Construction	Claudia Teague, cteague@flash.net		817-444-2247
Rose Garden, Tuesdays	Nan Garvin, garbre@hotmail.com		817-477-2867
304 Thistle Hill	1 st , 3 rd Weds. 8 am	Sue Fair	817-266-2514
304 Union Gospel Mission	Mon. 9 am	Gay Larson	817-441-6560
304 Teen Challenge	Wed. 9 am	Debbie Bollinger	817-498-1508
304 Common Ground NRH Community Garden	Wed. & Sat 8:30am-12n	Dianne Spradling Sandra Totty	817-431-4666 817-281-7877
304 Six Stones/City of Bedford Community Garden-		Annette Lee	214-803-2219
304 The Samaritan House	Tues. 8 am-11 am	John Pinkerton	682-433-2529
304 JPS Meditation Garden	2nd & 4th Fri. 9 am	Bernice Ramsbottom	817-485-6631
203 Grapevine Botanic Garden Docents	Call Chairman	Rachel Clark, Co-Chair Paula Wilbanks, Co-Chair	817-488-0035 817-481-4398
<u>Environmental Projects:</u>			
305 Composting Demo	1st Sat., Veterans Pk, Arlington	LaVonne Nowlin	817-581-1850
305 FW Library at Hulen St.	2nd Thurs 9 am	Bill Hall/ Theresa Thomas	817-737-9890 817-485-6789
305 SW Sub-Courthouse	2 nd Sat., last Wed. 9 am	Gailon Hardin	817-475-0923
305 Southlake Liberty Garden	Call Chairman	Wendi Carlucci	817-488-5640
	2nd Thurs., 8-11 am		
305 Veterans Park-Wildscape	Wed. 9 am-12 noon	Molly Hollar	817-319-6924
	1st Sat., 9 am-12 noon		
305 Bob Jones Nature Center	3rd Wed. 9 am	Nancy Searl	817-542-3190
<u>School Gardens:</u>			
306 Alice Carlson OLE	Mon. & Thurs. 8:30 am	Sharon Chastain	817-926-2575
306 Fitzgerald OLE	Mon 9 am & Wed 3:15pm	Leeann Rosenthal	817-237-7180
306 Heritage School OLE	Mon. 8-10 am	Pam Braak & Harold Annis	817-488-5665 817-481-6242
306 Durham Intermediate School	Wed 9am	Bea Wilson	817-401-2179

Important Websites to Know!

Our local TCMGA website:

<http://www.tarrantmg.org/>

State MG Website and TMG news:

<http://www.texasmastergardeners.com>

Our RC Demo Garden Website:

<http://www.localharvest.org/member/M27123>

Native Plant Society of Texas

<http://npsot.org>

Aggie Horticulture:

<http://aggie-horticulture.tamu.edu>

Earthkind:

<http://aggie-horticulture.tamu.edu/earthkind>

Texas Superstars:

<http://texassuperstar.com>

Fort Worth Botanic Garden:

<http://fwbg.org>

Wildscape:

<http://thewildscape.org>

Botanical Research Institute of Texas:

<http://www.brit.org>

Educational programs of Texas AgriLife Extension Service are open to all people without regard to race, color, sex, disability, religion, age, or national origin. The Texas A&M University System, U.S. Department of Agriculture, and the County Commissioners Courts of Texas Cooperating.

Individuals with disabilities who require an auxiliary aid, service, or accommodation in order to participate in any of our meetings are encouraged to contact our office at 817.884.1945 for assistance.



2013 Executive Committee

President: Patsy Miller pjmiller24@sbcglobal.net

1st VPresident: Taddie Hamilton taddieh@sbcglobal.net

2nd VPresident: Linda Hawkins линдamhawkins@gmail.com

Secretary: Donna Morris моррисd1@swbel.net

Treasurer: Pam Braak P.braak@verizon.net

2013 Advisory Committees

Acknowledgements: Pat Lovejoy palovejoy@att.net

Activities: Claire Alford caagardner@aol.com

Awards, State: Eleanor Tuck etuck@sbcglobal.net

Audit: Pat Higgins ragdollpath@sbcglobal.net

Awards, Local: Lena Goff lgoff15@aol.com

Bulletin Board: Theresa Thomas kayleetl@sbcglobal.net

eblast: Dorothy Launius the tcmgaeblast@gmail.com

Garden Conservatory/

Open Days: Ginger Bason gbasonbowden@gmail.com

Garden Resource: Dave Wilson ldwilson98@yahoo.com

Gardens, Community: Diane Spradling dianne@spradling.org

Historian: Sue Sappington sappington@uta.edu

Home & Garden Show Coordinators: Marilyn and David Newman

Marilynnnewman1@aol.com or damanewman@aol.com

Hospitality: Marianne Levine sappington@uta.edu

Intern Coordinator: Judy Ratzlaff judy.ratzlaff@yahoo.com

Members at Large: Henry Cole henry.cole@tx.rr.com
Cindy Wakely wakeleyd@charter.net

Membership: Steve Purdy spurdy06@sbcglobal.net

Nominating: Susan Stanek slstanek@verizon.net

Newsletter: Jackie Heidinger rheidinger@tx.rr.com

Parliamentarian: Hester Schwarzer wakeleyd@charter.net

Photography: Lena Goff lgoff15@aol.com

Plant Sale: Sue Kelley sandrkelley@sbcglobal.net

Peggy Harwood peggyjwh@gmail.com

Projects Coordinator: Judy Ratzlaff judy.ratzlaff@yahoo.com

Raffle: Donna Fry dfry1212@hotmail.com

Scholarship: Bill Hall 817-657-9890

Speakers Bureau: Starr Krottinger starr99@flash.net

Sunshine: Doris Hill artanddorishill@verizon.net

Resource Connection

TCMGA Garden: Bill Vandever bvandever@sbcglobal.net

Head Timekeeper: Carol Lally lallyca@sbcglobal.net

Website: Jackie Heidinger webmaster@tarrantmg.org